

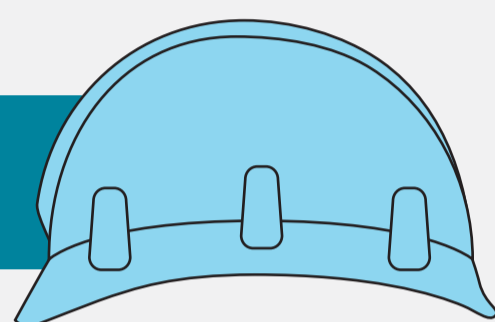
ECONOMIC IMPACT

GREAT LAKES-ST. LAWRENCE WATERWAY

PROVINCE OF QUEBEC

JOBS CREATED

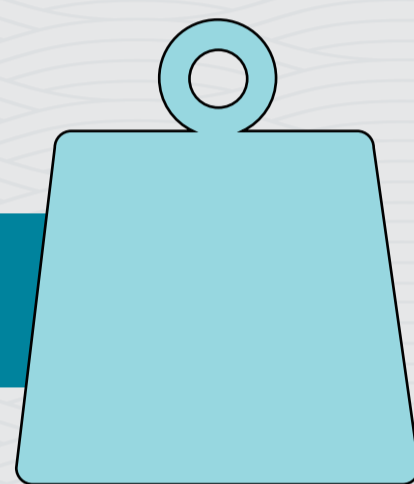
110,433



CARGO HANDLED

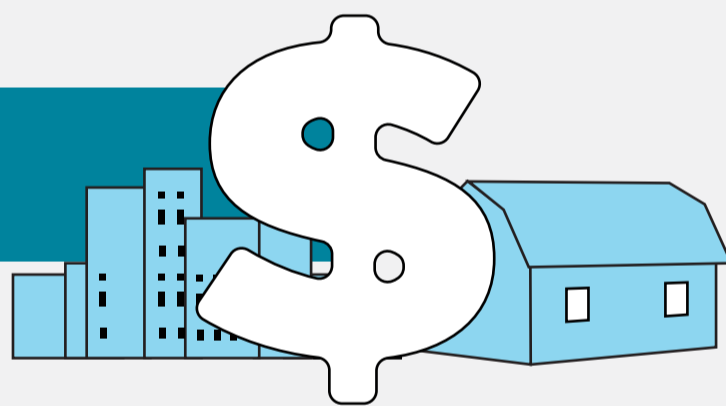
123.8 MILLION

IN METRIC TONS



ECONOMIC ACTIVITY

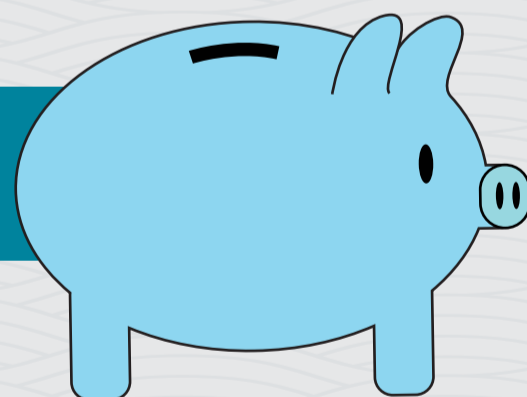
\$16 BILLION



INCOME GENERATED

\$5.8 BILLION

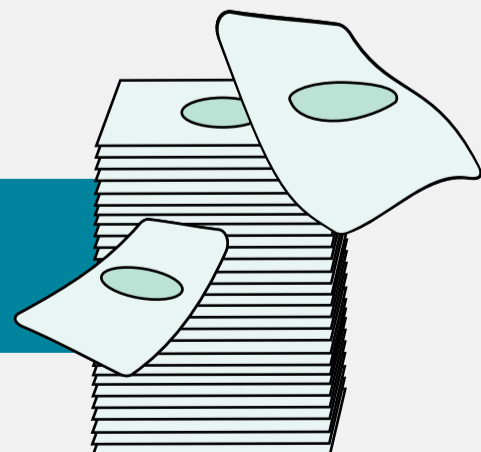
IN TOTAL PERSONAL INCOME &
LOCAL CONSUMPTION EXPENDITURES



TAX REVENUE GENERATED

\$3.7 BILLION

IN FEDERAL & PROVINCIAL TAX REVENUE



LEARN MORE: WWW.MARINEDELIVERS.COM

\$ = CDN UNLESS OTHERWISE NOTED. SOURCE: MARTIN ASSOCIATES, ECONOMIC IMPACTS OF MARITIME SHIPPING IN THE GREAT LAKES-ST. LAWRENCE REGION, CHAPTER III GREAT LAKES-ST. LAWRENCE RIVER WATERWAY IMPACTS, EXHIBIT III- 11.