

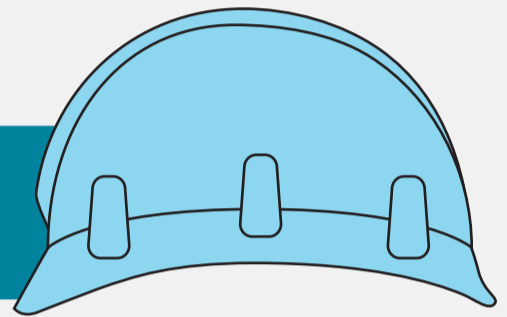
ECONOMIC IMPACT

GREAT LAKES-ST. LAWRENCE WATERWAY

PROVINCE OF ONTARIO

JOBS CREATED

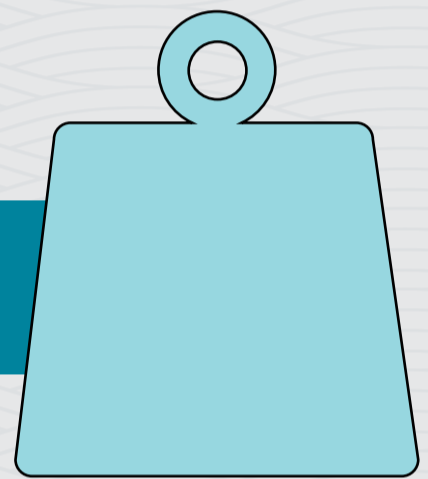
70,647



CARGO HANDLED

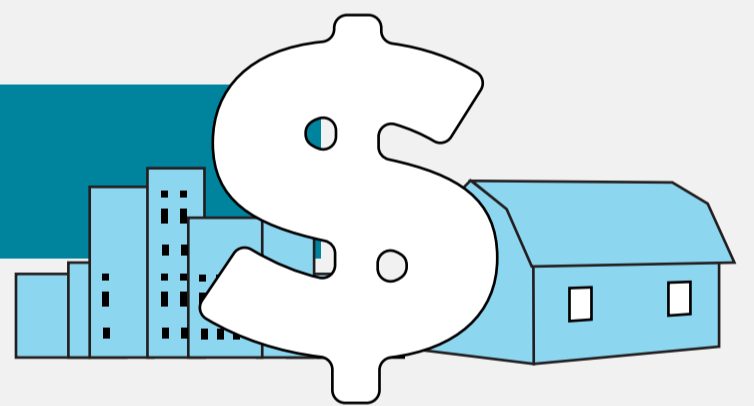
61.3 MILLION

IN METRIC TONS



ECONOMIC ACTIVITY

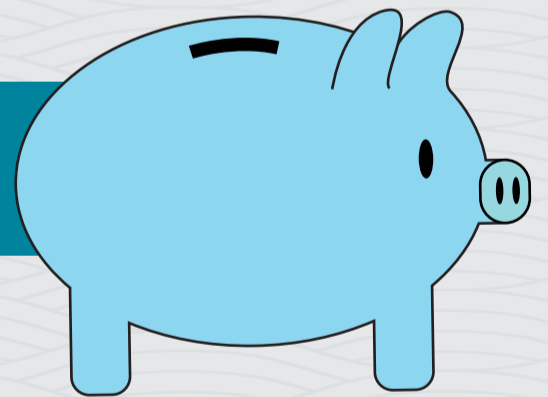
\$10 BILLION



INCOME GENERATED

\$3.9 BILLION

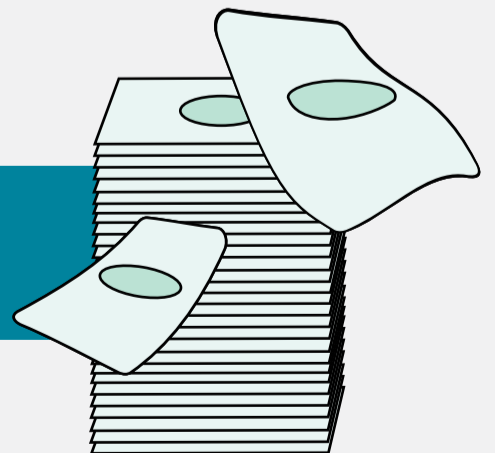
IN TOTAL PERSONAL INCOME &
LOCAL CONSUMPTION EXPENDITURES



TAX REVENUE GENERATED

\$1.9 BILLION

IN FEDERAL & PROVINCIAL TAX REVENUE



LEARN MORE: WWW.MARINEDELIVERS.COM

§ = CDN UNLESS OTHERWISE NOTED. SOURCE: MARTIN ASSOCIATES, ECONOMIC IMPACTS OF MARITIME SHIPPING IN THE GREAT LAKES-ST. LAWRENCE REGION, CHAPTER III GREAT LAKES-ST. LAWRENCE RIVER WATERWAY IMPACTS, EXHIBIT III- 11.